



**TECH
COATINGS**

FIRE RATED SYSTEMS

TECHNICAL DATA SPECIFICATION

TDS: PTR-NLT30

Fire Rated Wall Penetrated by Timber

TECHNICAL DATA SPECIFICATION

System	PenoLock
TDS	PTR-NLT30
Separating Element	Fire Rated Wall
Fire Resistance Rating	--/30/30

System Description

PTR-NLT30 has been tested in accordance with AS 1530.4:2014 to provide a --/30/30 fire resistance rating (FRR) to a fire wall penetrated by timber.

Note: This system covers, but is not limited to, trusses, purlins, floor joists or any type of timber construction where the timber cross sectional size is 90mm x 45mm or greater, or where the timber is denser than 350kg/m³.

Materials

FBL-100 Intumescent Coating GIB Fire Soundseal

Material(s) Technical Data

FBL-100

Description	Intumescent Coating
Colour	White
Specific Gravity	7.5 – 8.5
PH Range	7.5 – 8.5
Weight/Litre	1.38kg
Volume Solids	68%
Weight Solids	70%
Viscosity	1800cP
VOC	19 g/L (Low)
Adhesion-Strength	400psi
Shore D hardness	77 (extra hard)
Scrub-Resistance	35 cycles

GIB Fire Soundseal

Description	Sealant
Density	1.63g/cm ³
Colour	Red
Application Temp	5°C – 30°C
Skin Time	15 min @ 25°C/50% RH
Cure Time	1 day per 1mm
Skin Time	15 min @ 25°C/50% RH
Can be Painted	Paintable after 24 hours @ 20°C/50% RH

TECHNICAL DATA SPECIFICATION

Installation Instruction

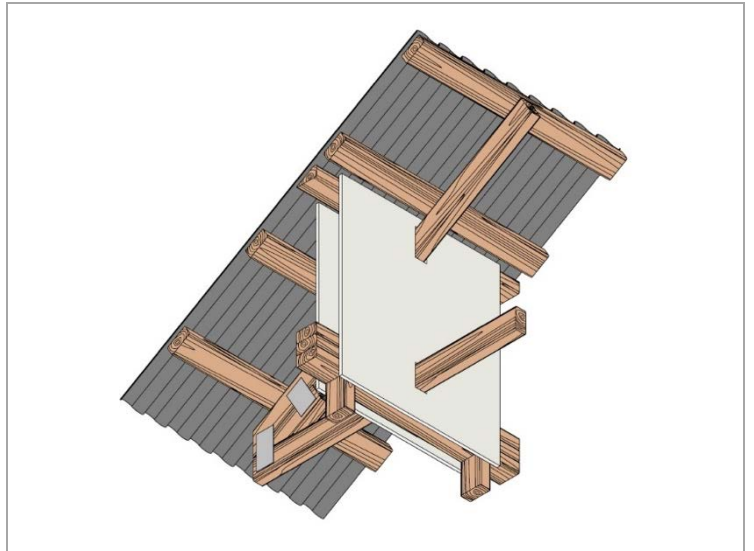
PTR-NLT30-1 Timber Trusses

1. Surface Preparation

Ensure all surfaces to be coated are clean, free of dust, debris, and oil.

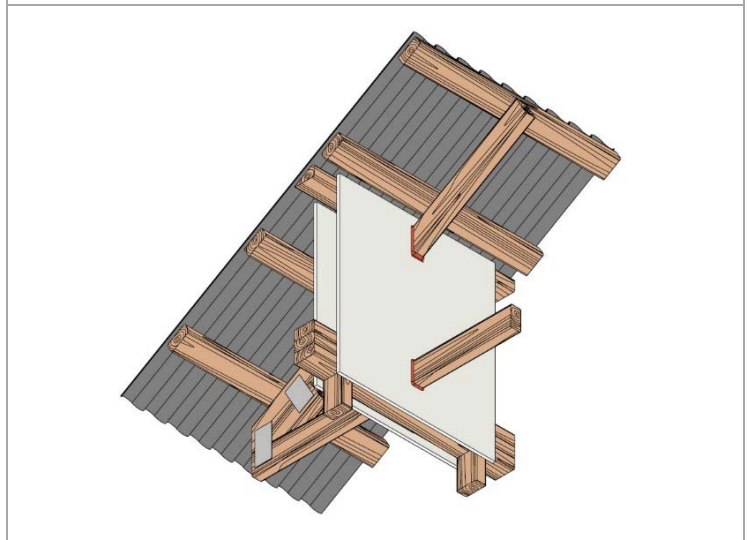
*It is most important that the plasterboard wall and timber have been cleaned thoroughly.

If in doubt of the process, please refer to AS/NZS 2311:2017 Guide for Painting of Buildings.



2. Mastic Application

Fill any annular gap less than 5mm with GIB Fire Soundseal.

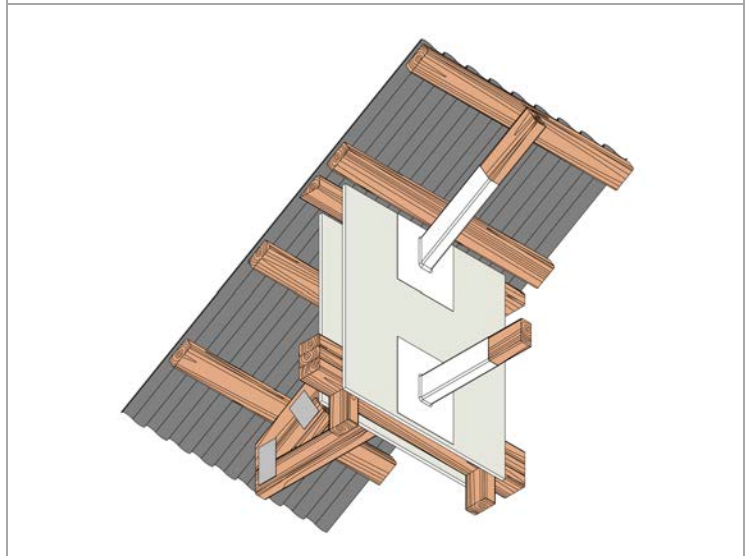


3. Intumescent Coating Application

When GIB Fire Soundseal has dried, apply FBL-100 until the 650µm tooth of the WFT comb provided has paint on it.

The patch on the wall is to be 100mm from each side of the timber.

Paint the top and bottom chord to 300mm from the wall.



TECHNICAL DATA SPECIFICATION

Installation Instruction (cont.)

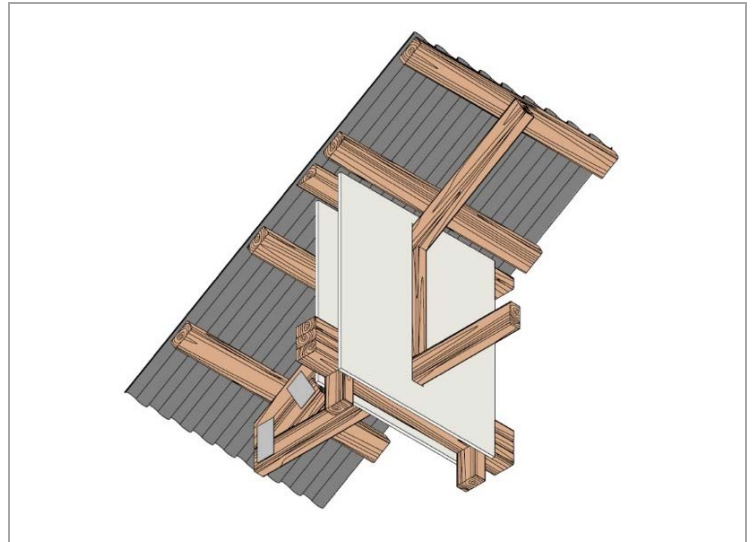
PTR-NLT30-2 Timber Trusses with Vertical Web

1. Surface Preparation

Ensure all surfaces to be coated are clean, free of dust, debris, and oil.

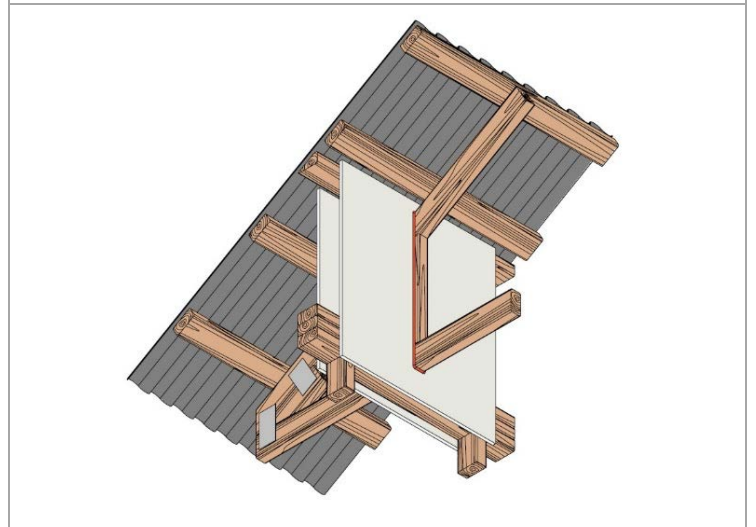
*It is most important that the plasterboard wall and timber have been cleaned thoroughly.

If in doubt of the process, please refer to AS/NZS 2311:2017 Guide for Painting of Buildings.



2. Mastic Application

Fill any annular gap less than 5mm with GIB Fire Soundseal.

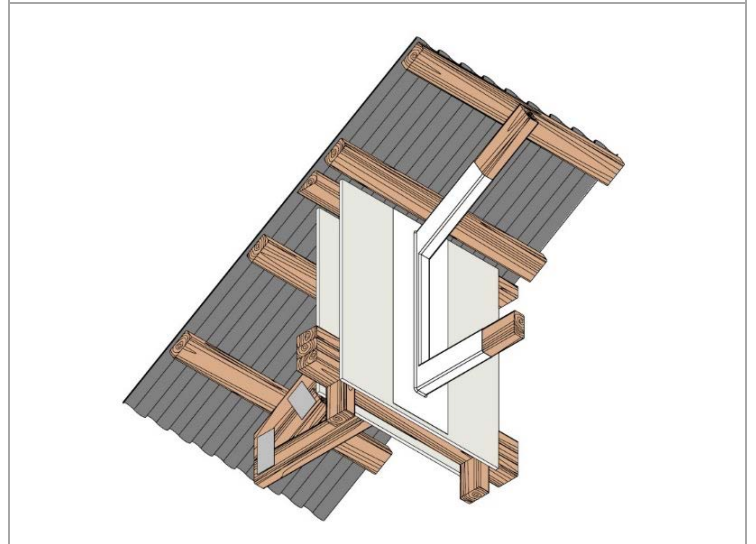


3. Intumescent Coating Application

When GIB Fire Soundseal has dried, apply FBL-100 until the 650µm tooth of the WFT comb provided has paint on it.

The patch on the wall is to be 100mm from each side of the timber.

Paint the top and bottom chord to 300mm from the wall.



TECHNICAL DATA SPECIFICATION

Installation Instruction (cont.)

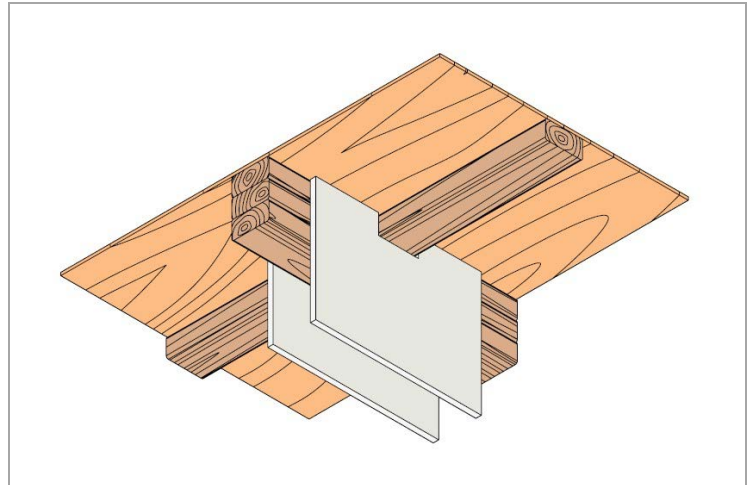
PTR-NLT30-3 Timber Purlin with Combustible Substrate

1. Surface Preparation

Ensure all surfaces to be coated are clean, free of dust, debris, and oil.

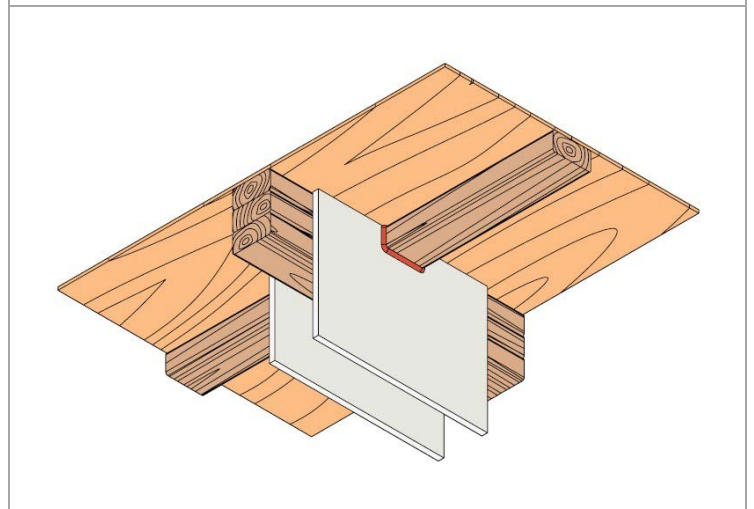
*It is most important that the plasterboard wall and timber have been cleaned thoroughly.

If in doubt of the process, please refer to AS/NZS 2311:2017 Guide for Painting of Buildings.



2. Mastic Application

Fill any annular gap less than 5mm with GIB Fire Soundseal.

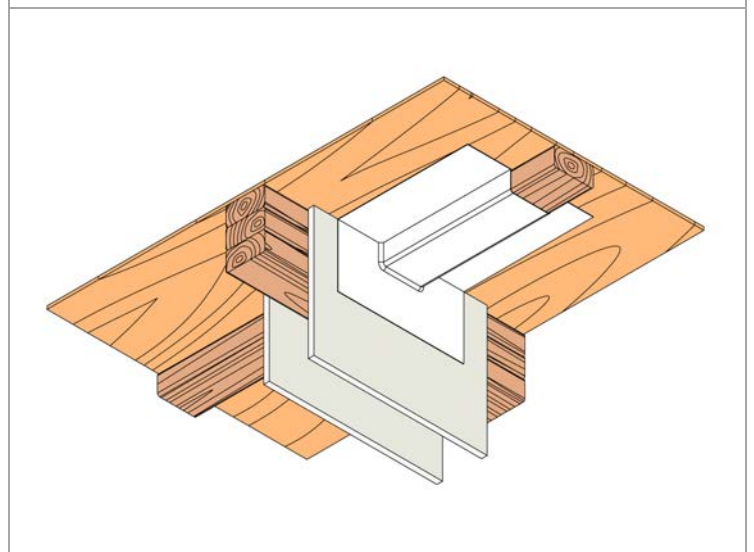


3. Intumescent Coating Application

When GIB Fire Soundseal has dried, apply FBL-100 until the 650µm tooth of the WFT comb provided has paint on it.

The patch on the wall is to be 100mm from each side of the timber.

Paint the timber purlin to 300mm from the wall and paint a strip 100mm wide either side of the timber purlin on the substrate above.



TECHNICAL DATA SPECIFICATION

Installation Instruction (cont.)

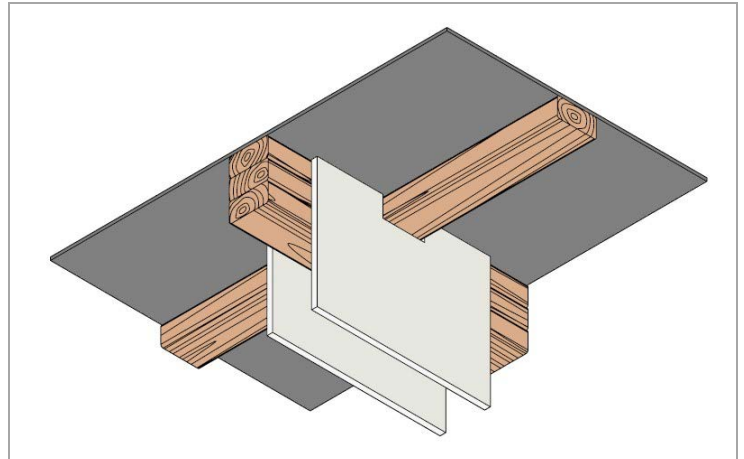
PTR-NLT30-4 Timber Purlin with Non-Combustible Substrate

1. Surface Preparation

Ensure all surfaces to be coated are clean, free of dust, debris, and oil.

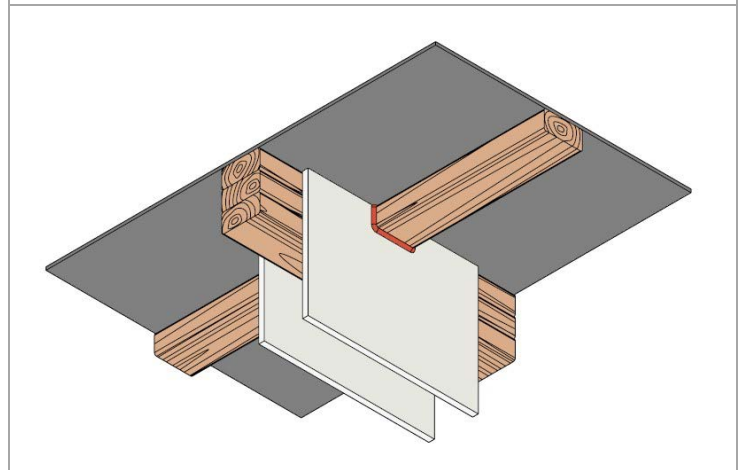
*It is most important that the plasterboard wall and timber have been cleaned thoroughly.

If in doubt of the process, please refer to AS/NZS 2311:2017 Guide for Painting of Buildings.



2. Mastic Application

Fill any annular gap less than 5mm with GIB Fire Soundseal.

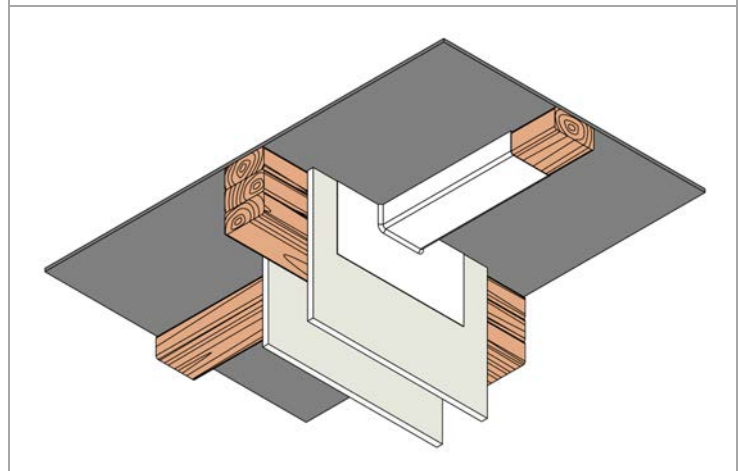


3. Intumescent Coating Application

When GIB Fire Soundseal has dried, apply FBL-100 until the 650µm tooth of the WFT comb provided has paint on it.

The patch on the wall is to be 100mm from each side of the timber.

Paint the timber purlin to 300mm from the wall.



4. Topcoat Application (applicable for all, PTR-NLT30 1 to 4)

Tech Coatings recommends using a high-quality topcoat from a reputable supplier. This will protect the intumescent coating from any unforeseen environmental or mechanical damage.

TECHNICAL DATA SPECIFICATION

Further Information

For further information on the different types of timber construction, please look at the drawings

- PTR-NLT30-1
- PTR-NLT30-2
- PTR-NLT30-3
- PTR-NLT30-4

Please note that these drawings are for reference only.

Supplier Contact Details

Tech Coatings

www.techcoatings.co.nz

technical@techcoatings.co.nz

DISCLAIMER:

Tech Coating NZ Ltd will have no liability to any party whatsoever in respect of the performance and/or fitness for purpose of the specification in the event of the claimant not being able to demonstrate compliance with the 'TCNZ Technical Application Manual, Interior substrates'. Tech Coatings NZ Limited is not responsible for determining the suitability of FBL-100 to substrates other than those that we have tested. The information contained in this document is given to the best of Tech Coatings NZ Ltd knowledge based on testing and practical experience. *Tech Coatings NZ Limited is the exclusive distributor (Supplier) for the manufacturer of this product, International Coating Group (Manufacturer). To the extent the Supplier supplies Goods to a Consumer pursuant to the Consumer Guarantees Act 1993 (Act), you are entitled to the guarantees set out within the Act, including any additional applicable remedies under New Zealand consumer law against the Manufacturer. These rights are the only guarantees which the Supplier offers in relation to this Good and are, to the fullest extent permitted by law, in lieu of all other express or implied warranties applicable to the Good whether statutory or otherwise. This guarantee applies to defects in the manufacture or formulation of the Good and does not cover failure caused by any factors beyond our control.

This document contains information and content that is proprietary to Tech Coatings NZ Limited and is the intellectual property of Tech Coatings NZ Limited. This document and its content are protected by Copyright laws globally.